



Multi-Category Medicine for Neoplasms

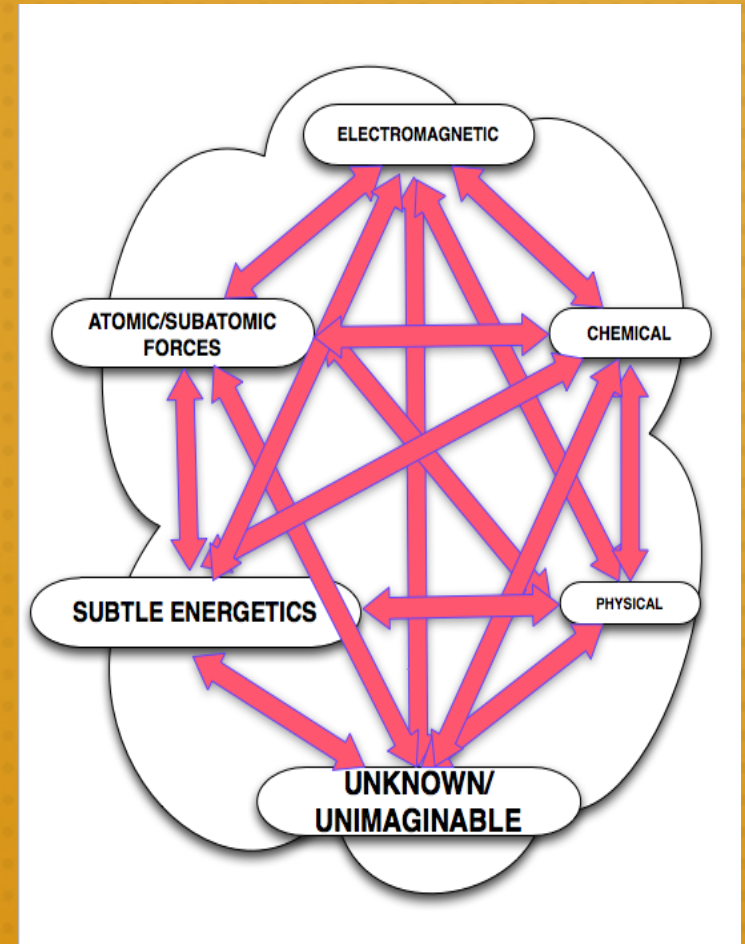


*James Woessner, MD PhD, Honolulu, Hawaii.
Senior Advisor, Electromedicine Clinic,
Frankston, Australia.
Email: woessner.james@gmail.com*

*Richard Malter, Director
Electromedicine Clinic, Frankston,
Australia.
Email: contact@electromedicine.org.au*

Multi-Category Medicine (MCM)

- Complex Body
- Shepherding recovery
- Natural progression – “do no harm”
- Multiple
- Simultaneous
- Dynamic
- Interacting
- Synergistic – Entourage Effect
- Cascading
- Individualized/Personalized
- Normalization/Return to Homeostasis
- Art of Medicine!



Mainstream vs MCM

- **Single Causation/Uni-category**

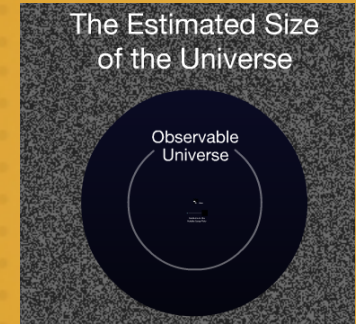
- Labs & Xrays
- Acute Disease
- Payment Based
- High Tech/Costly Procedures
- Big Pharma
- Signs/Symptoms Focus
- Standard of Care
- Population EBM
- Syndrome = ????
- Coverup
- Linear degeneration
- Protocols/Guidelines

- **MCM**

- Wholistic View
- Chronic Disease
- Outcome Based
- “Natural” – “do no harm”
- Herbs/Supplements/Food
- Underlying Mechanisms
- Personalized
- Individual & Dynamic
- Functional Medicine
- “Cure”
- Regenerative/Restorative
- General Systems Theory

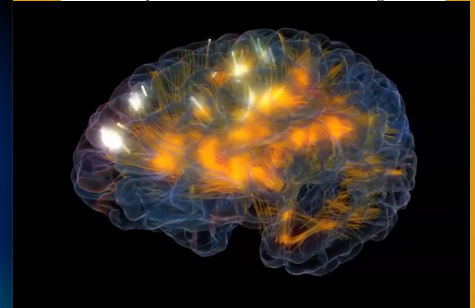
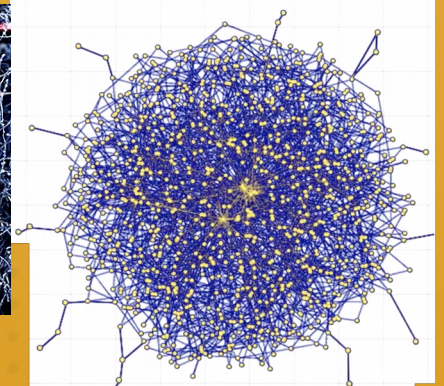
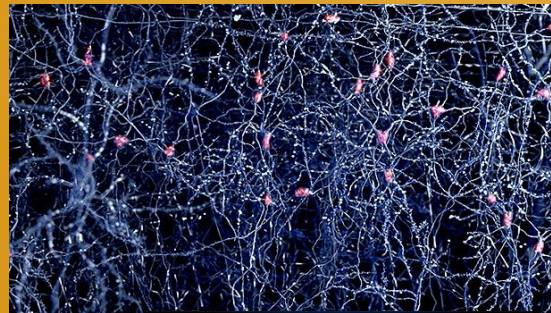
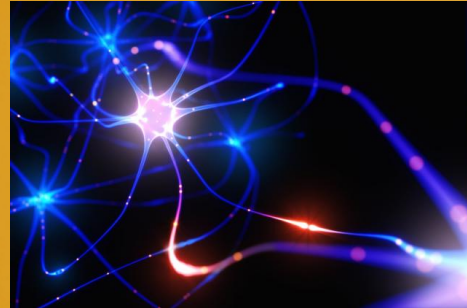
Spectrum of Scales

- One of many possible universes
- Our place in the Milky Way
- The smallest designated size



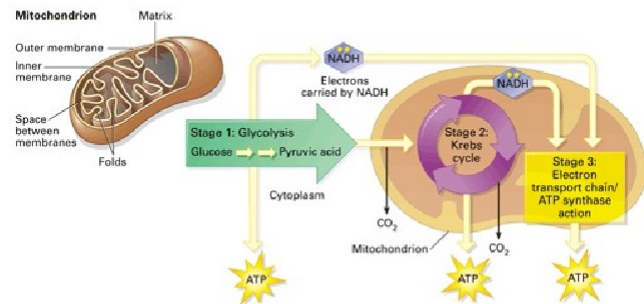
Neurological Scale

- As with the atom, in all scales most volume is space, limited mass.
- Small environments in and around cells are called the microenvironment; BDORT is of the milli-environments.
- In the brain:
 - 10 quintillion neuroreceptors
 - 500 trillion synapses
 - 100 billion neurons
 - 1 sextillion (21 zeros) *chemical reactions/sec*

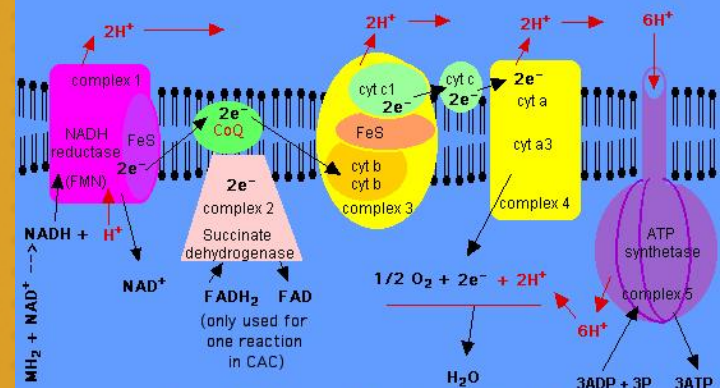


Microenvironment Cellular Events

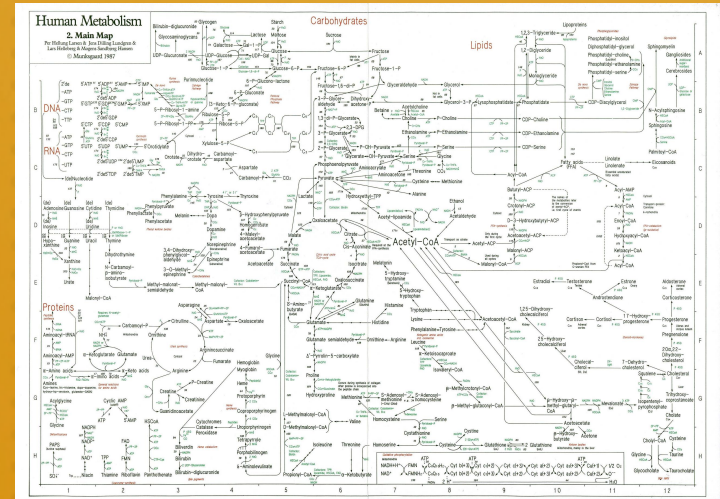
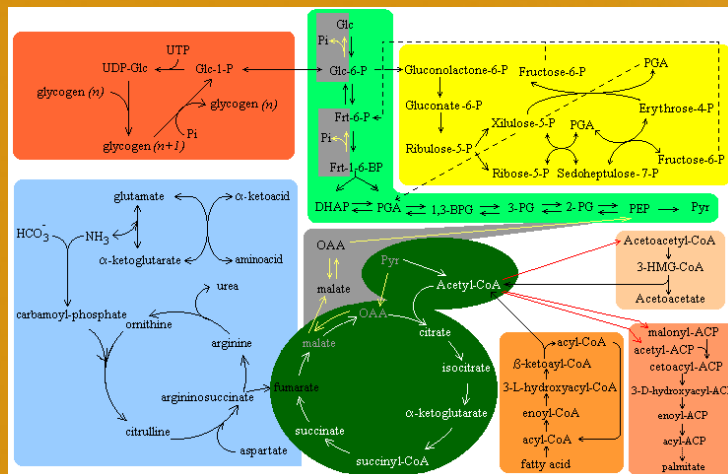
Metabolic Pathway of Cellular Respiration



Electron Transport Chain inside Mitochondria

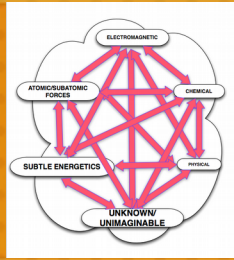


C. Ophardt, c. 2003 Citric Acid Cycle and Fatty Acid Oxidation Occur



X 100 trillion, 99% unknown

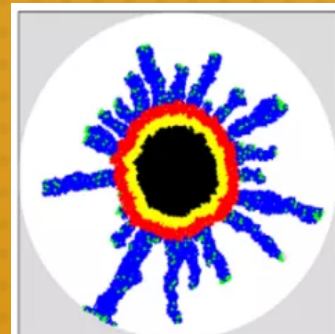
Realities



- We are dealing with Infinite complexity that is changing every moment everywhere on all scales.
- In the midst of this mind-boggling complexity, we live by generalizations.
- Science is a useful, but is polar opposite of Reality.
- Single cause is far too simplistic for chronic disease and daily life.
- The body is not a homogeneous bath tub that does infinitely vary for spot to spot while organizing into tissues and organs.
- Our main focus is the microenvironment.
- MCM consistent with recipes with multiple ingredients, amounts/intensities, sequences and durations is the logical next step.
- General Systems Theory fits for MCM thinking.

Neoplasm treatment with MCM

- **General Systems Theory (GST):**
 - A neoplasm is a pathological '**Emergent Property**' of abnormal microenvironments.
 - “Invasive” dendritic branches can be generated in simulations as emergent properties of microenvironments.



Jiao Y, Torquato S, 2011.

- This complexity requires MCM, and implemented with dynamic 'recipes', not protocols nor guidelines.

Neoplasm treatment with MCM

- Conventional oncology cut / poison / burn
logically antithetical to GST approach.

MCM Neoplasm Treatment Aim

**Normalize abnormal
microenvironments**



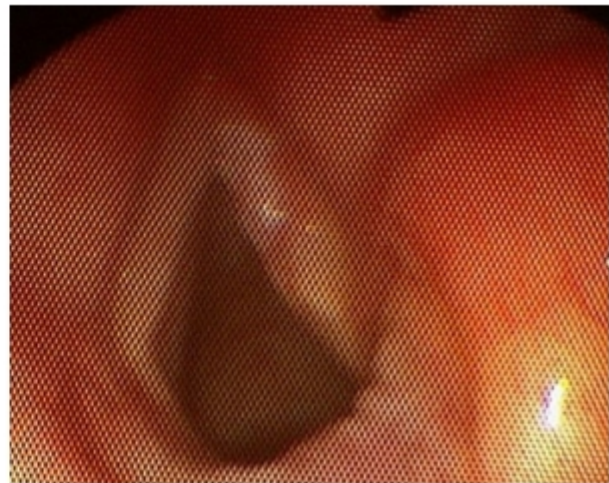
**Malignant Emergent Plasticity
dis-integrates / reverses**

Illustrative Results: Neoplastic Process Tissue Reversal

**Lentigo maligna melanoma
invasive Clark Level II**



Vocal cord SCC



Some Clinical Categories of MCM

- **Electromagnetic**

- Electromedicine (electrotherapy)
- Radiation exposure testing
- Radiation exposure interventions

- **Chemical**

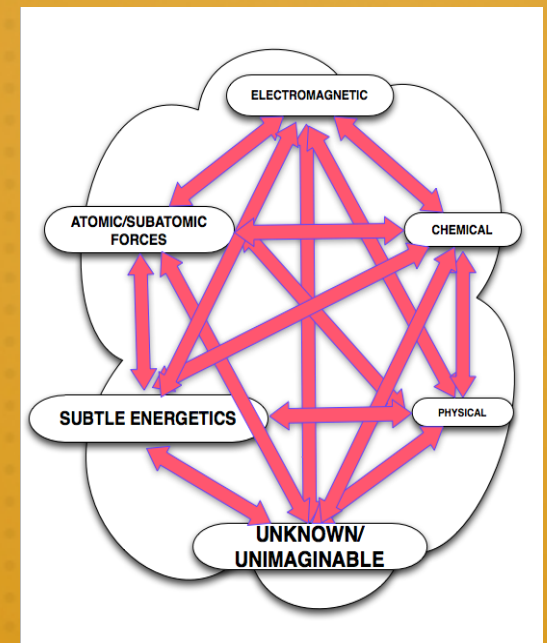
- BDORT milli-environmental assay
- Toxins or excess
- Medicines
- Diet

- **Subtle Energetics**

- Intentioning
- Conditioned Space (C-Space)

- **Physical**

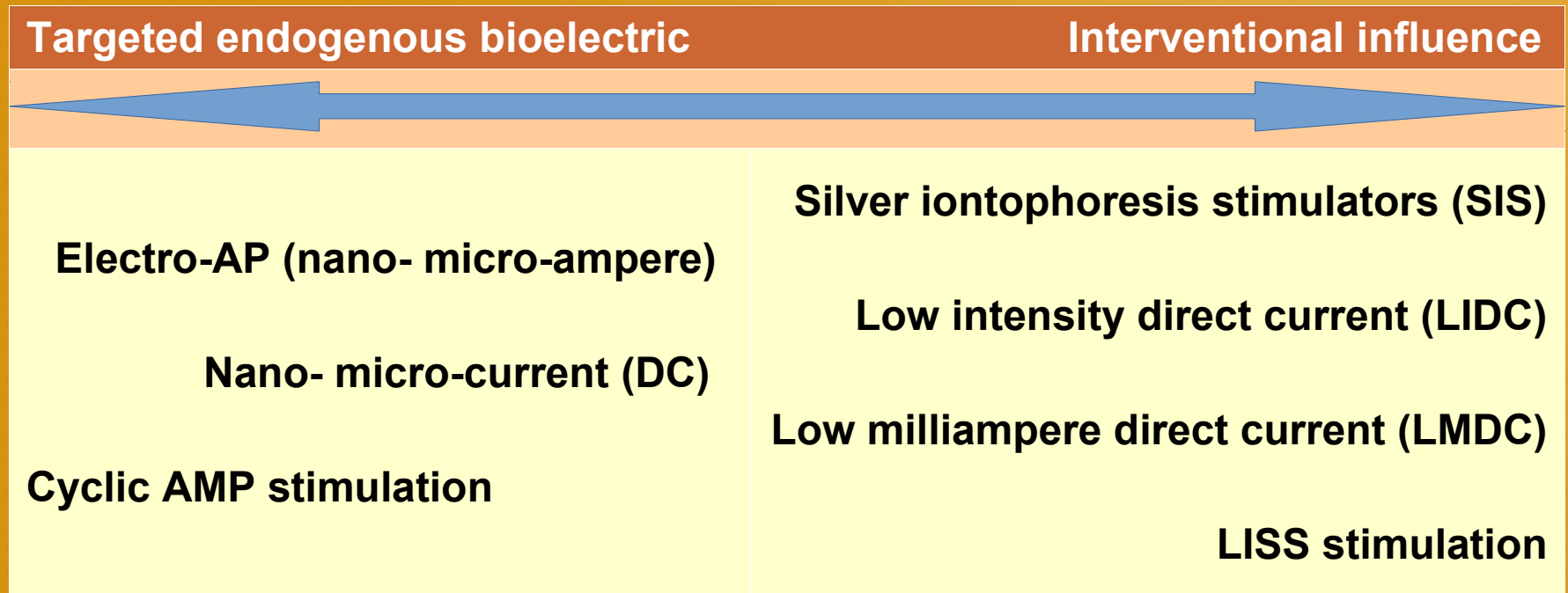
- Mechanical changes: circulation, exercise, massage, etc.



Electromedicine / Electrotherapy

GENERAL CLASSIFICATION OF STIMULATION	TARGET	EFFECT
Targeted endogenous bioelectric	Existing physiology	Enhance Supplement
Interventional influence	We decide to have 'X' effect on endogenous bioelectrics/physiology	Overwhelm Block Microbicidal 'Blanket' boost

Classification of our electro-stimulators



New electromedical tools for neoplasm MCM



DEVICE	FUNCTION	EFFECT
SIS M200	Silver iontophoresis LIDC	Infection treatment: virus, bacteria, fungal, yeast
SIS M200-MA	LMDC	Apoptosis
WMcAMP	Cyclic AMP production & utilization modulation	Inflammation modulation Pain attenuation Tissue healing Apoptosis

New electromedical tools for neoplasm MCM

- Silver iontophoresis & LIDC



International Symposium on Integrative Medicine, Sao Paulo, Brazil, 2015:

Integration of Silver Iontophoresis Principles in a Device for Bacterial and Viral Infection Treatments, Wound-Healing, Tissue Repair and Regeneration

Malter, Woessner.

New electromedical tools for neoplasm MCM

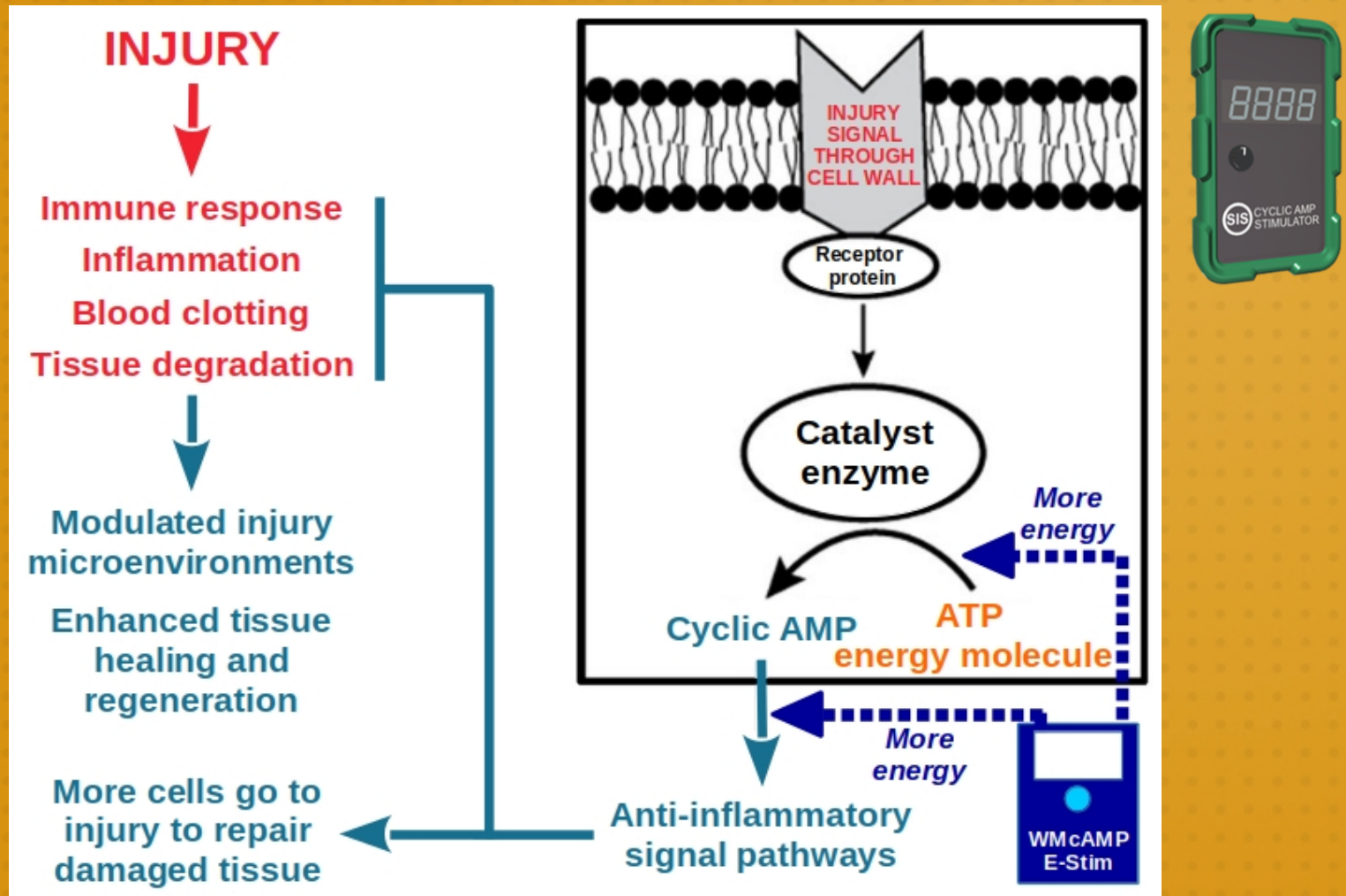
- **Low milliampere direct current**



- ~1-2 milli-amperes
- Apoptosis effects
- Constant current for internal body targets
- Real-time lesion-specific programmable
- Silver-nylon hybrid wet/dry electrode interface for continuous, extended application
- Data-based development

New electromedical tools for neoplasm MCM

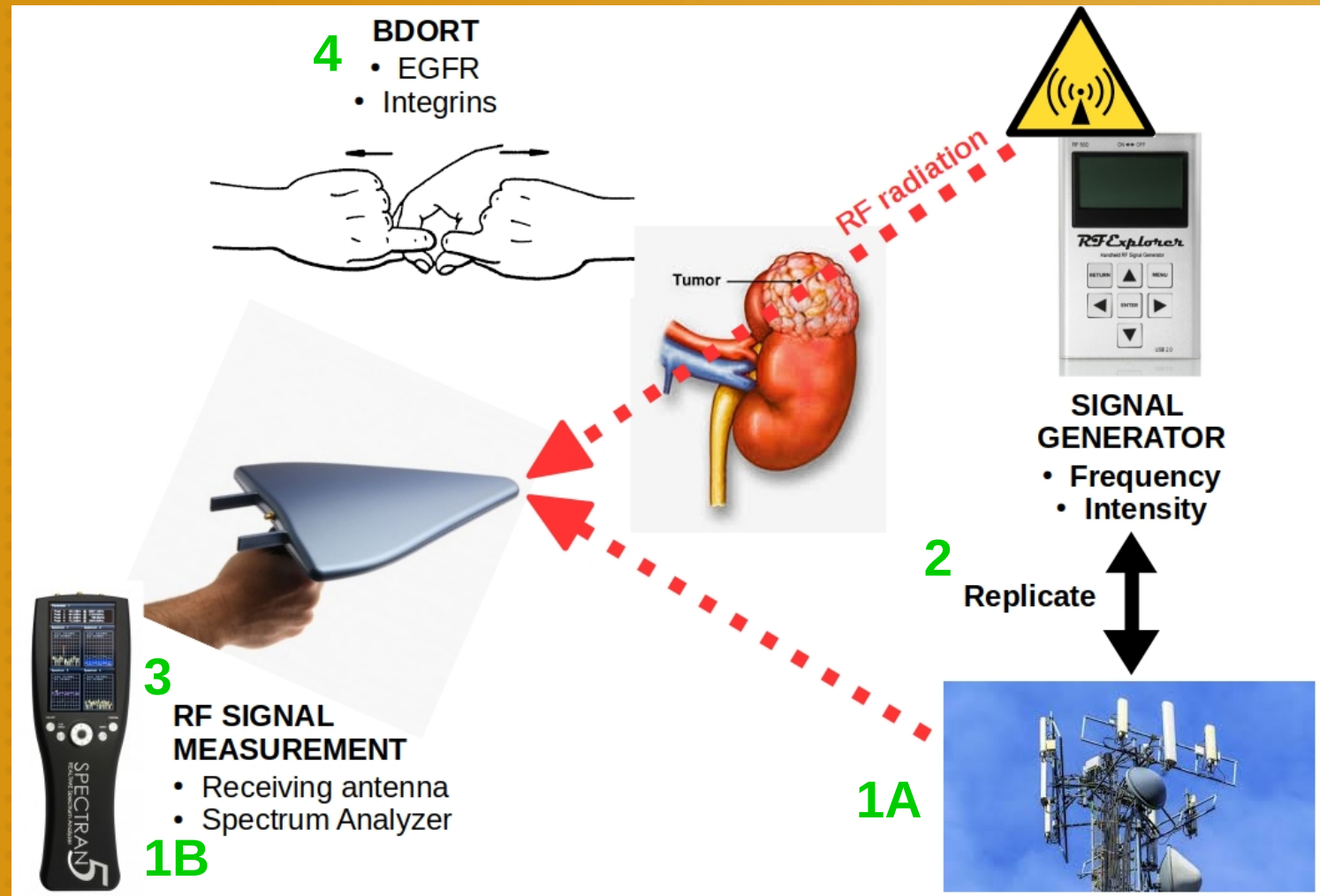
- **Woessner-Malter Cyclic AMP Stimulator**



Adapted from Yuan X, Arkonac DE, Chao P-HG, Gordana VN. 2014

Electromagnetic: Radiation exposure testing

• Clinical Neoplasm RF Exposure Test



- Identify harmful source(s)
- Isolate harmful Hz(s)

Electromagnetic: Radiation exposure testing

• Ionizing Radiation Exposure Testing

Geiger counter:

- Implanted radioactive iodine pellets (3++ months)
- PET scans
- Environmental exposure
- Ingested substance exposure

Electromagnetic:

• Exposure Interventions

• E-field and RF Shielding

- Local near environment shielding: 240/120V, walls, Smart Meters . . .
- **Body shielding: Custom RF reflective clothing** (solid metallic fibre interwoven cloth does not wash out).



• Remove sources

- WiFi, microwave oven, electric blanket, cordless phones, cellphone/tablet next to body.

• Reduce proximity

- Phone towers, WiFi routers, Smart Meters, cordless phone base.

Chemical: BDORT Assay

- **Extra BDORT milli-environmental substances:
Real-time measurement**

- Matrix metalloproteinases (MMPs): 1,2,7,9,13
- BCL2 (apoptosis suppressor)
- KRAS (proto-oncogene)
- BKV, JCV (polyamovirus family)
- Heat Shock Protein (HSP) 70
- CD3,5,10,15,20,21,24,29
(immune system, cancer stem cells)
- RUNX3 (transcription activation or suppression)

⇒ Available from: Abcam, Origene, Sigma-Aldrich, etc.



Chemical: Toxins or excess

- **Mercury - Hg**
- **Asbestos - Asb,**
- Beryllium - Be,
- Palladium - Pd,
- **Lead - Pb,**
- Aluminum – Al,
- **Cadmium – Cd,**
- Arsenic – As,
- Germanium – Ge,
- Barium – Ba,
- Iron – Fe,
- Strontium – Sr
- Copper – Cu,
- Titanium – Ti,
- Silver - Ag,
- Zinc – Zn,
- Chromium – Cr,
- Antimony - Sb,
- Silicon - Si,
- Nickel – Ni,
- Gadolinium – Gd,
- Vanadium – V,
- Selenium – Se
- Iodine – I,
- Tin – Sn,
- Gold – Au,
- Manganese – Mn
- **Glyphosate**

Chemical: Medicines

Substance	Normalizing Purpose and Effect
Cilantro (freeze dried) Zeolite (Australian) Chlorella	Toxin chelation
CBD	Apoptosis
Flaxseed oil Nicatinomide (Vitamin B3) Hemp oil Opti3 (vegetarian omega 3 supplement)	Viral infection
Artemisia Annua	Non-viral, non-bacterial infection Apoptosis
Neem leaf	Non-viral, non-bacterial infection

Chemical: Diet

- PLANT-BASED

ILFG↓↓

- Whole foods / non-processed / non-GMO

- LOW GI

- ORGANIC

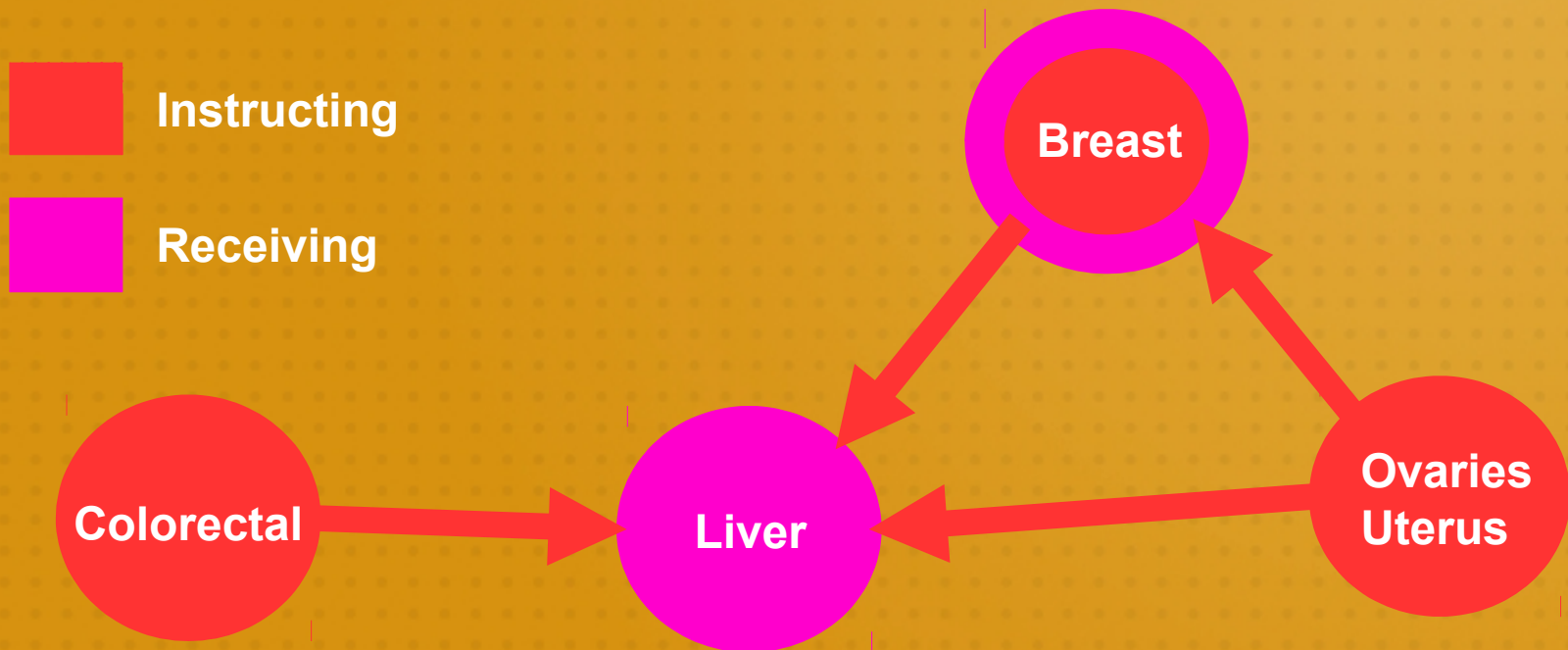
→ Individualized nutritionally



Processed meat: Group 1 carcinogenic.
Red meat: Group 2A carcinogenic.

- **Cancer Stem Cell (CSC): “Instructor Cell” relationships**
- **Beyond “metastasis”**

Common relationships: Clinical Experiences



Bi-Digital O-Ring Test Electrical Cord Method Examination

CSC / “Instructor Cell” relationships

- **Supporting literature**

- Transmembrane potential of GlyCl-expressing instructor cells induces a neoplastic-like conversion of melanocytes via a serotonergic pathway.
Blackiston D, Adams DS, Lemire JM, Lobikin M, Levin M.
- The effects of surgery on tumor growth: a century of investigations.
Demicheli R, Retsky MW, Hrushesky WJ, Baum M, Gukas ID.
- Effect of surgical removal on the growth and kinetics of residual tumor.
Gunduz N, Fisher B, Saffer EA.
- Integrated (Chinese and Western) Medicine Approach to Breast Cancer (2-Target Breast Cancer Stem Cells or initiating cells Therapy).
Phounsavan SF. 26th Annual International Symposium on Acupuncture and Electro-Therapeutics. October 2010, Columbia University, New York, USA.

Subtle Energetics

Annual International Symposium on Acupuncture and Electro-Therapeutics,
NYC, USA, 2013:

Measurable Subtle Energetics in Research and Treatment Application and Outcomes

Malter, Woessner.

Subtle Energetics

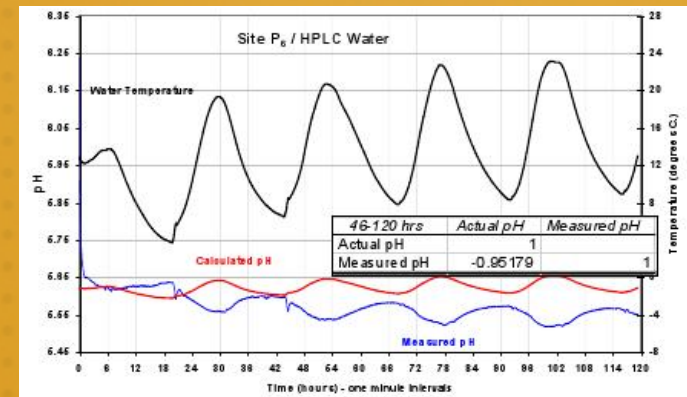
Intentioning: *Patients and Clinicians*

- Measurable with standard lab equipment.
- Real-time clinic session ‘feedback’ of combined efforts of clinicians and patients.
- Potential for far ‘bigger’ clinical outcomes.
- Probable factor in extraordinary “miracle” outcomes.

Subtle Energetics

Clinical 'conditioned space' (C-Space)

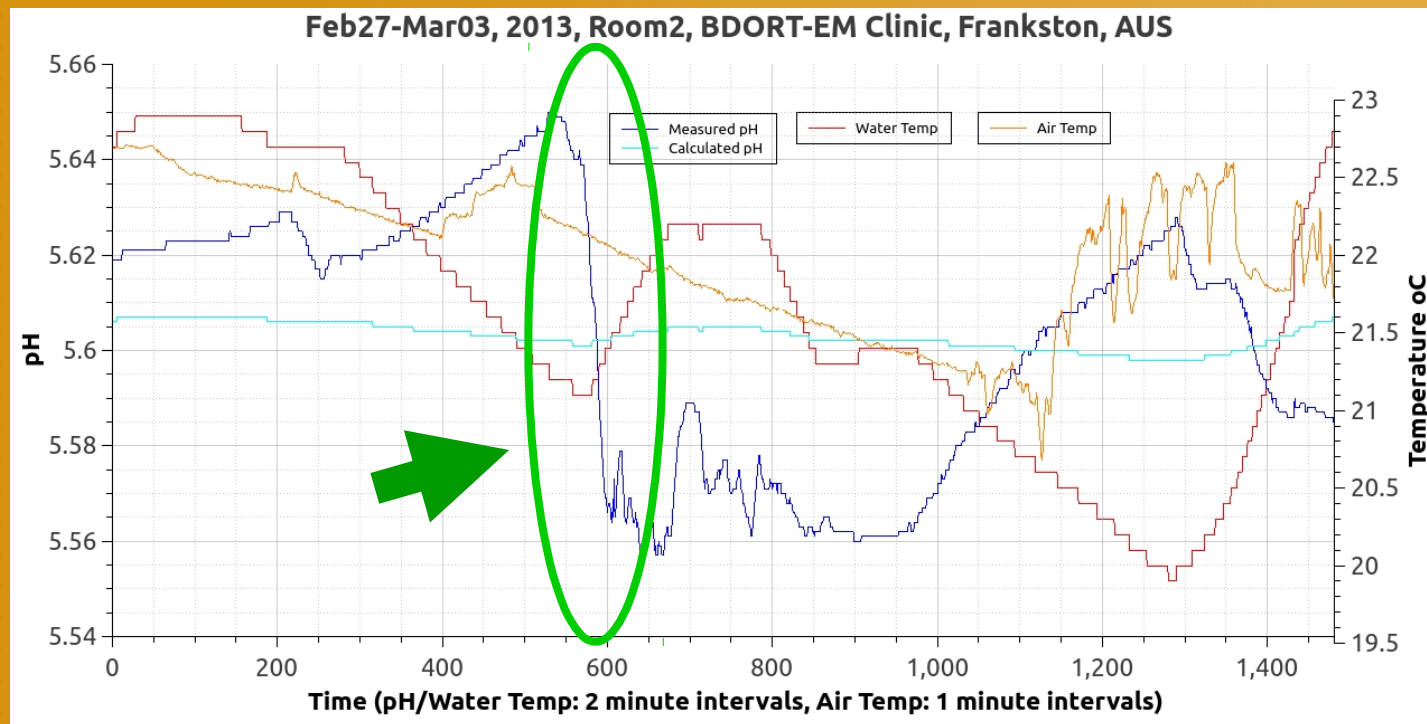
- Increased background potential for more powerful clinical effects.
- **Intentioning** effects 'magnified'.
- May exist in your clinic.
- Can be created.
- Measurable with standard lab equipment.



Tiller W, Dibble W, et al.

Subtle Energetics

- C-Space Intentioning



EXTREMELY LARGE AMOUNTS of extra free energy become available

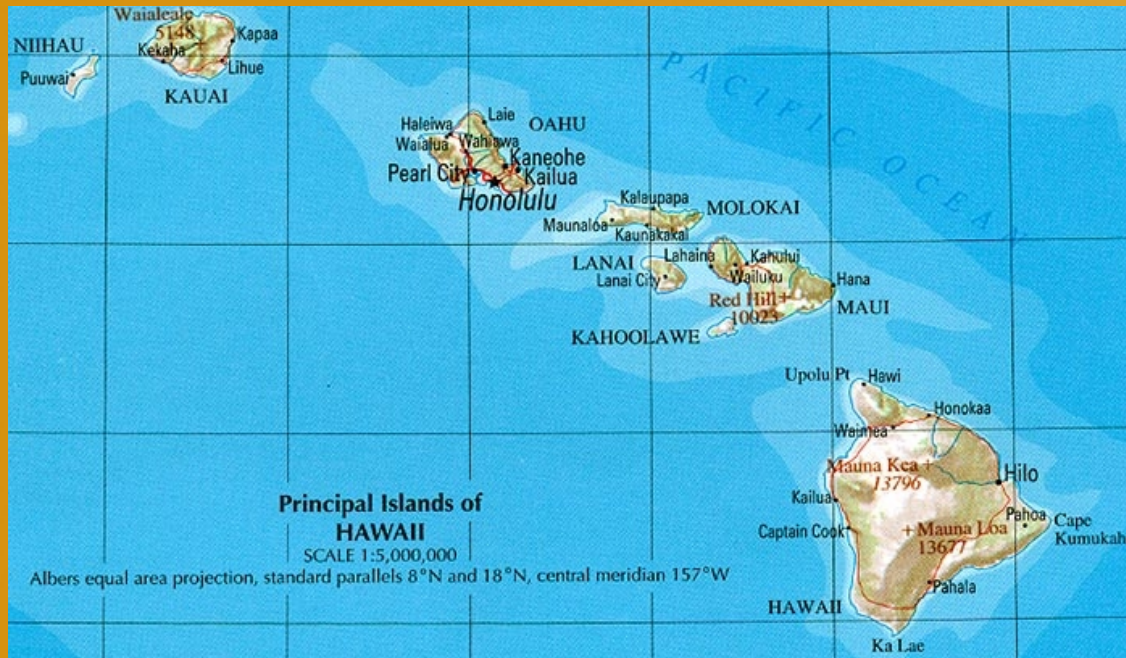
- **Bi Digital O-Ring Test: Key MCM Tool**



BDORT

Yoshiaki Omura MD, ScD

Thank You



SEP
2017